



PLAN SEDONA

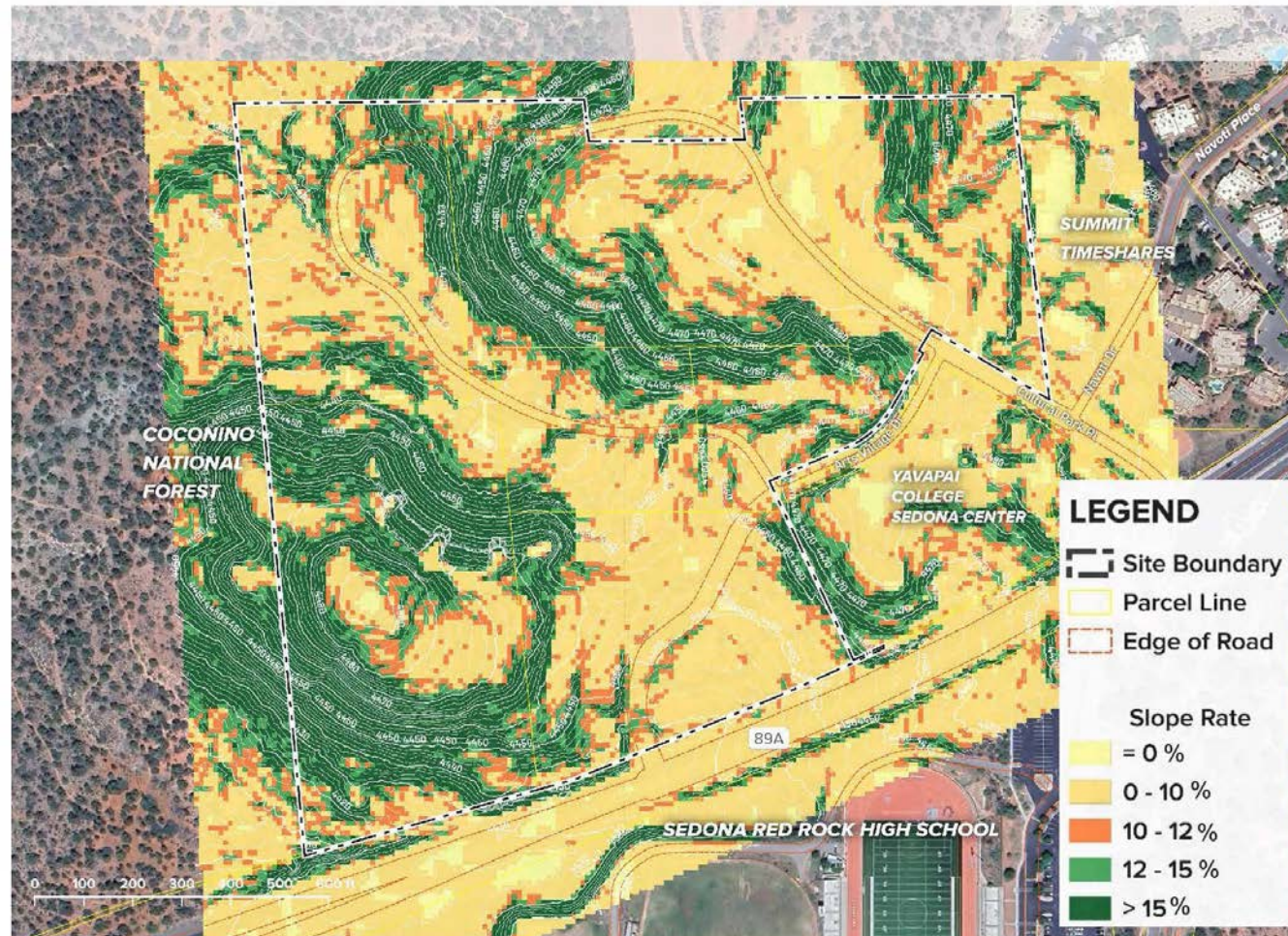
WESTERN GATEWAY MASTER PLAN
PUBLIC WORKSHOP #2

SITE CHARACTERISTICS AND ANALYSIS

- Northwest corner of property is the lowest part of the site.
- High points are 40' to 50' above 89A.

Slope Analysis

- Yellow and orange range from 0% to 15% slope = suitable for new development.
- Green are over 15% slope present significant challenges for new development.
- Approximately 27-acres of the 41-acre property is deemed suitable for development.



Elevation Across Site

